

Construction Equipment Liquidation

AUCTION

Timed Online



Equipment located at
2302 South Pierce Avenue,

Mason City, Iowa

Opens: Monday, December 6

CLOSES: MONDAY, DECEMBER 13, 2021 AT 1PM

CRANES

2015 Manitowoc Grove GMK5165-2, crane, Mercedes Benz diesel, 197', 6-section boom, all wheel steer, bi-fold lattice swing away hyd. luffing jib, Megatrak suspension system, ECOS operating system, SS exhaust, 5-axle w/2015 Nelson boom trailer, twin lock boom pinning system, outriggers, counter weights, automatic, 158,338 lb., 75' travel length, 10'6" travel width, 13'6" travel height, (10) 20.5R25 tires, (12) 255/70R22.5 tires, VIN 5130-7557

Link-Belt HSP-8028S, shows 2,553 hrs., crane, Cummins V378C, 28 Ton, 24' lattice fly jib, 121" WB, 4x4x4, front & rear outriggers, 17' outrigger, 70' 3-section boom, Lath 1151H monitor, combination steering, 20.5-25 tires, S/N 47H9-238

TELEHANDLER

2012 JLG Sky-Trac 10054, shows 3,409 hrs., telehandler, Cummins 4 cyl., 54' reach, 10,000 lb. lift, outriggers, 4WD, full enclosed cab, all wheel steer, block heater, poly fenders, 72" pallet forks, 400/75-28 tires, S/N LJE00800260

AERIAL PLATFORM

2005 JLG 1250AJ Ultra Boom, shows 707 hrs., manlift, diesel, 125' lift, 63' horizontal, 1,000 lb. capacity, knuckle boom, 44,000 lb. machine weight, Deutz TCD 2.9L diesel, 445/50D710 tires, S/N 0300086508

SKID STEER

2008 Bobcat T320, shows 4,443 hrs., track skid steer, diesel, CAH, 78" bucket, material bucket, hi-flow aux. hyd., hyd. quick coupler, foot throttle, ISO controls, 48" pallet forks, S/N A7MP40151

FORKLIFT

Case 586E, shows 2,950 hrs., rough terrain forklift, diesel, ROPS, 48" pallet forks, side shift, 4-speed, diff. lock, 6,000 lb. max, 2-stage 21" height, 19.5-24 fronts, 12x16.5 rears, S/N JJG0251289

SEMI TRAILERS

(2) **1985 Fruehauf F2-45**, dry van, 45'x102'x96" wood floor, swing doors, spring susp., office in front, 68,000 lb. GVWR, 295/75R22.5 tires

Wells Fargo, office trailer, 24'x93", bumper hitch, roof & wall A/C units, brakes, 175/85R14 tires

Flatbed Trailer, tandem axle, 20'x102", shop-built, ball hitch, wood floor, aluminum toolbox ring tie downs, 235/85R16 tires

GENERATOR

1976 Cummins VTA12-800-GS, diesel AC, shows 665 hrs., twin turbo V12 diesel engine, on ammunition trailer, 120/208V & 240/416V, model 680FDC5036AB, 500Kw, 3-phase, 300 gal. fuel tank w/Fill-Rite pump, trailer has all wheel brakes, air susp., metal roof, 317"x96", pintle hitch, 385/65R22.5 tires, S/N DK-92055-911-2

PICKUP TRUCKS

2012 Dodge Ram 3500, shows 125,048 miles, 2WD, Cummins, crew cab, 8' bed, diamond plate toolboxes, 44"x20"x16", nerf bars, 265/70R17 tires, VIN 3C63D2GL0CG302439

2011 Dodge Ram 3500, shows 357,327 miles, 2WD, Cummins, dually, crew cab, 9' aluminum contractor's bed, (5) DeeZee aluminum toolboxes, 4'x2'x2', headache rack, ladder rack, 235/80R17 tires, VIN 3D6WF4CL5BG577587

2010 Dodge Ram 3500, shows 267,449 miles, 2WD, Cummins, dually, crew cab, Westin nerf bars, 9' aluminum contractor's bed, (4) aluminum toolboxes, 60"x18"x18", ladder rack, headache rack, 235/80R17 tires, VIN 3D73M4CW2AG153917

2010 Dodge Ram 3500, shows 369,923 miles, 2WD, Cummins, dually, crew cab, 9' aluminum contractor's bed, ladder rack, headache rack, DeeZee nerf bars, 235/80R17 tires

ENCLOSED CARGO TRAILERS

2012 Jensen VS, enclosed trailer, 12'x96"x86", tandem axle, single wheels, 12,000 lb. GVWR, swing doors, 24" rock guard, generator frame on tongue, brakes, metal tool bench, metal shelving, Masterforce built in toolbox, power strip, LED lights, ladder rack, 235/80R16 tires, VIN 1J9VS1625DH030475

2011 Jensen VS, enclosed trailer, 12'x96"x86", tandem axle, single wheels, 12,000 lb. GVWR, swing open doors, 24" rock guard, generator frame on tongue, brakes, metal tool bench, metal shelving, Masterforce built in toolbox, power strip, LED lights, ladder rack, 235/80R16 tires, VIN 1J9VS1625BH030277

2011 Jensen VS, enclosed trailer, 12'x96"x86", tandem axle, single wheels, 12,000 lb. GVWR, swing doors, 24" rock guard, generator frame on tongue, brakes, metal tool bench, metal shelving, Masterforce built in toolbox, power strip, LED lights, ladder rack, 235/80R16 tires, VIN 1J9VS1628BH030337

Jensen VS, enclosed trailer, 12'x96"x86", tandem axle, single wheels, 12,000 lb. GVWR, swing doors, 24" rock guard, generator frame on tongue, brakes, metal tool bench, metal shelving, Masterforce built in toolbox, power strip, LED lights, ladder rack, 235/80R16 tires

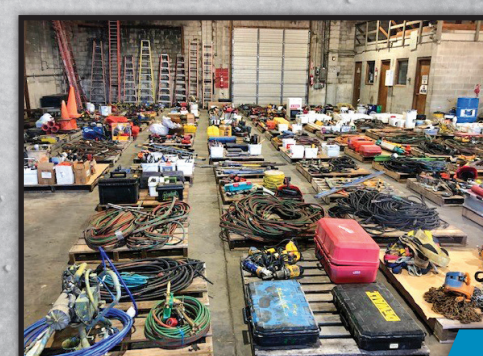
Jensen VS, enclosed trailer, 12'x96"x86", tandem axle, single wheels, 12,000 lb. GVWR, swing doors, 24" rock guard, generator frame on tongue, brakes, metal tool bench, metal shelving, ladder rack, 235/80R16 tires

MOBILE LIGHT TOWER

Magnum Light Buster 4060-MH, shows 3,927 hrs., light tower, Isuzu 3LB1 diesel, 120/240V, single phase, (4) light, ball hitch, 205/75R15 tires, S/N 021296

CONCRETE FORMS, CRANE ATTACHMENTS, TOOLS & TOOLBOXES, VARIOUS CONSTRUCTION ITEMS, AND MUCH MORE!

Auctioneer's Note: Don't miss this chance to be able to bid on quality commercial grain handling and millwright construction equipment including Trucks, Trailers, Cranes, Aerial Platforms & much more!



Global Ag, Inc.

Richard, 515.669.4819
or Todd, 641.430.0967

Contact Steffes Group at 641.423.1947;

Steven Nelson, 641.430.2591 or Nate Larson, 319.931.3944



641.423.1947 | SteffesGroup.com

Steffes Group, Inc., 2245 East Bluegrass Road, Mt. Pleasant, IA 52641



TERMS: All items sold as is where is. Payment of cash or check must be made sale day before removal of items. Statements made auction day take precedence over all advertising. \$35 documentation fee applies to all titled vehicles. Titles will be mailed. Canadian buyers need a bank letter or credit to facilitate border transfer.

additional photos online